

# APPROVAL SHEET

CUSTOMER:

DESCRIPTION:

YD-GZX-0540-2.4G-1.13-L310MM-IPEX 1

PART NO.:

YD-GZX-0540

CUS PART NO.:

D A T E:

2025.2.18

signature

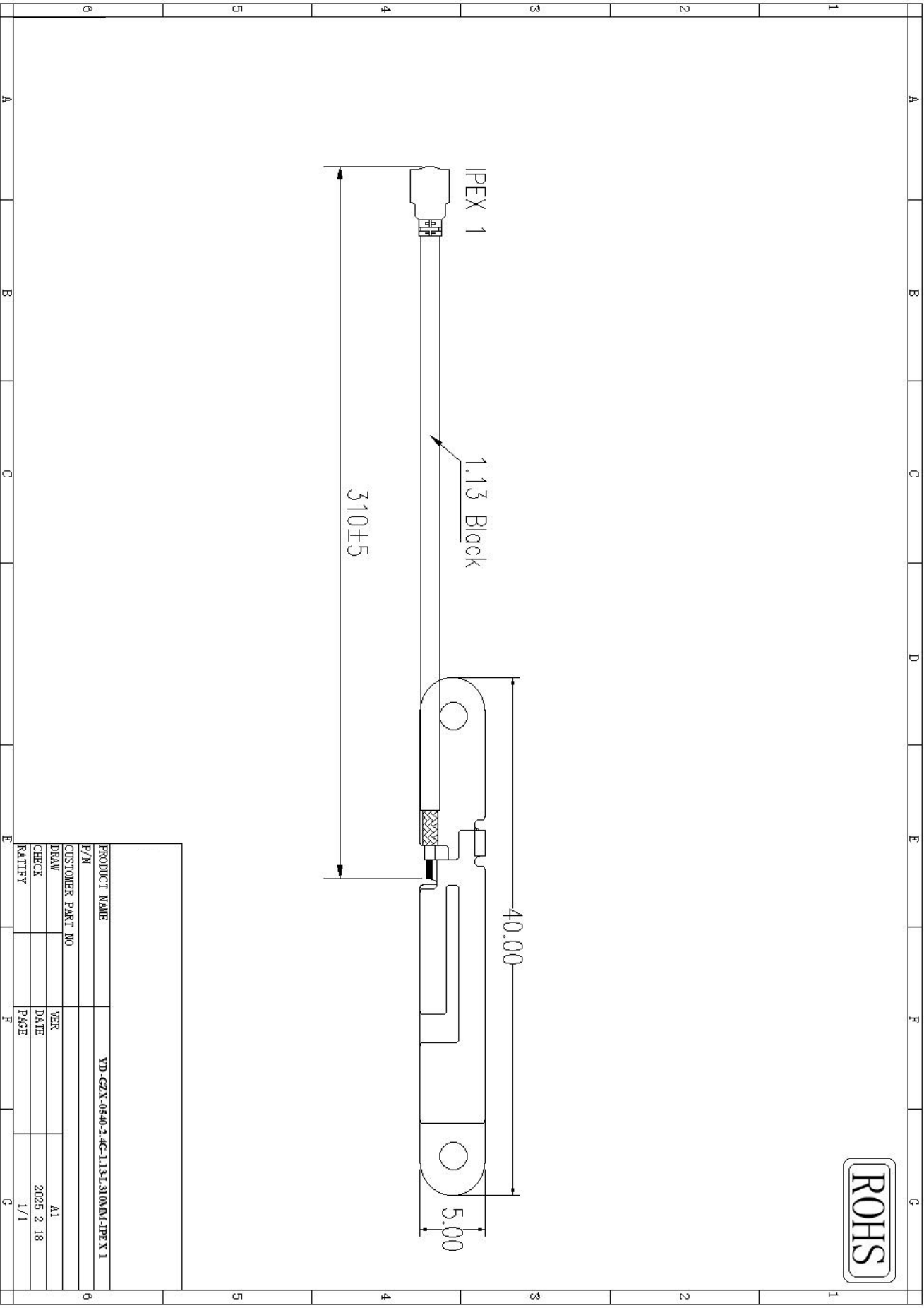
ENGINEERING DEPARTMENT	Q C DEPARTMENT	SALES DEPARTMENT

Customer signature

ENGINEERING DEPARTMENT	Q C DEPARTMENT	PURCHASING DEPARTMENT

✂ Approval in duplicate, please signed by your company.

1.Antenna structure diagram:



# Technical parameters of electrical apparatus

## Electrical Specifications

Frequency Range	2400~2500MHz
VSWR	≤2.0
Input Impedance	50 Ω
Gain	0DBI

## Mechanical Specifications

Wire color	Black
Input connector	IPEX 1
Cable length	310mm
Working Temperature	-40°C~+85°C
Working Humidity	20~80%

## Environment performance test:

Project	Test condition	Test results
<b>Storage environment</b>	Test temperature, humidity, pressure without stated condition as follwings :1.Temperature: -30 °C ~ +80 °C ;2.Relative humidity: 45%-85%;3,Pressure: 86kpa-106kpa	Electrical and mechanical performance normal
<b>High and low temperature test</b>	Having 5 times cycle between -40°C to 70°C,Then in common condition 1-2 hours test exterior quality.	Measurement satisfied with electrical and mechanical performance normal.
<b>Resistance constant hot and humid test</b>	Relative humidity:95±3%,Test temperature: 40°C,last 2 hours ,put it after 5 min test the electrical function . Test products during common condition 1-2 hours ,Then test exterior quality.	Measurement satisfied with electrical and mechanical performance normal.
<b>Vibration test</b>	Vibrate Frequency:10-55HZ; Distance :0.35mm;Acceleration :50.0m/s;Sweep frequency cycle:30 times	Electrical and mechanical performance normal
<b>Fall test</b>	From 1 mheight fall down 3 times freely (vertical direction)	Electrical and mechanical performance normal